



# GRAMPUS

## EXCLUSIVE LINE

2022 | BALI 4.6

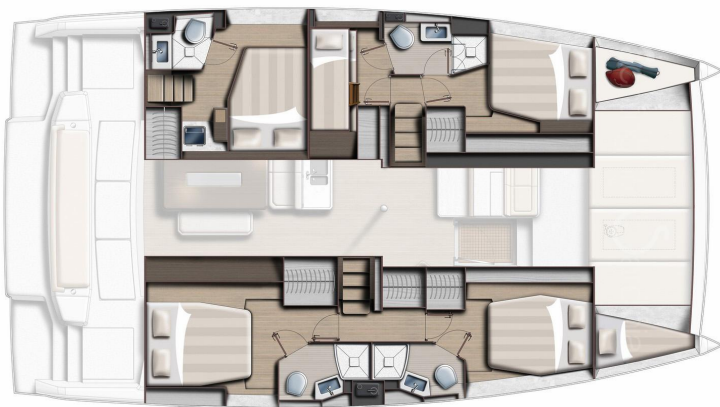
14,28 M | 6 CABINS | 11 GUESTS

## INFORMATION

The BALI catamarans are known and appreciated for their rigid front cockpits with lounge and sunbathing areas, the platform connecting the two rear skirts with large bench and trunks, the large tilt-and-turn door and sliding windows as well as a panoramic relaxation area on the roof. BALIs are much more than catamarans, they are witnesses to life experiences and sharing.

# SPECIFICATIONS

YEAR OF BUILD	LENGTH (M)	BEAM (M)	DRAUGHT (M)
2022	14.28	7.66	1.22
BERTHS	CABINS	HEADS	WATER CAPACITY
11	6	4	800.00 l
FUEL CAPACITY	ENGINE	MAIN SAIL	
800.00 l	2x57 hp	Full batten	



# General Features

## HOTEL EQUIPMENT

Air conditioning (220V, dinette only)	Cockpit Cushions
Deck Sunbed Cushions	Duvets for all the berths
Electric Toilets	Fly bridge Cushions
Fridge/Freezer (400/200 lt)	Fully equipped kitchen
Memory mattresses	Microwave
Plancha Kit (BBQ+Sink)	Smart TV+Chromecast
Underwater Lights	Water purifier
Watermaker	Welcome Kit
WiFi	





## NAVIGATION EQUIPMENT

Anchor Chain Mt75 D12	Cockpit Light
Cockpit/dinette chartplotter (A12/A7)	Electric Winch
Electric windlass	Folding gangway (not guaranteed in 2024)
Inflatable Life Jackets	Inox Anchor 35Kg
Inverter 2000W	Service battery 910A
Solar panels	

## OPTIONAL

Canoe	Gennaker
Hammock	Hostess
Life Jacket Kids/Junior	Liferaft
Luggage storage	Outboard Engine
Provisioning (delivery service onboard)	RIB 550 40/60 Hp
Safety net	Skipper
Snorkeling set	Stand up Paddle board
Transfer service	

