



SAILERA  
YACHTING

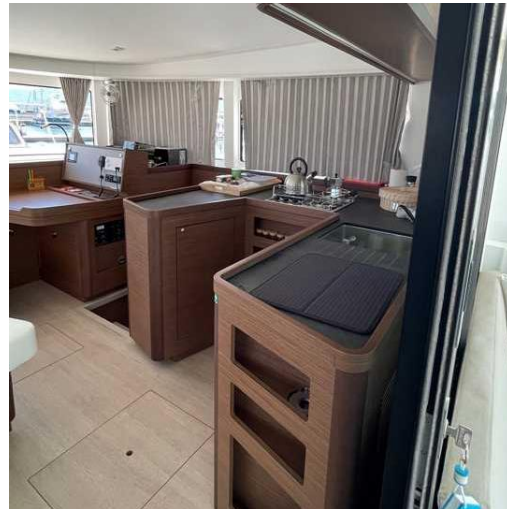


LOA 12,8 m - Beam 7,7 m - Draft 1,25 m  
Cabins 4+2, Berths 8+2, Heads 4  
Water Tank 600 Lt - Fuel 600 Lt  
Engine 2x57 HP Yanmar

## LIQUID ASSET (Lagoon 42) 2021

Classic Main Sail , Self Tacking Jib  
Electrical Winch at helmstation  
Dinghy with oars & pump, 3 m  
Domestic Bateriaes, 4 x 140 Ah  
Electrical Windlass, 1000 W  
20 Kg Delta Anchor & 100 m of Chain  
8 + 2 Fenders  
Speed,depth, wind inst. Autopilot GPS – Plotter, V.H.F. with  
AIS receiver  
Bimini at helm station  
PVC curtains at helm station  
Cockpit Cushions  
Foredeck Sunbathe Mattress  
Battery Charger  
Inverter (12V to 220V)  
220 V Shore Power Cable & adaptors  
Solar Panels  
USB outlets in cabins  
Water Heater  
Fan in Saloon & Cabins  
3 burner LPG Stove & Oven  
230 Lt. Refrigerator - Freezer  
Electric Toilets  
Radio-MP3 Player  
Cockpit Speakers





## STANDARD EQUIPMENT

### Engine

2 x 57 Hp Yanmar  
Sail drive  
3 Blades fixed aluminum propeller  
Engine spares  
Engine spare oil  
20 L. diesel jerrycan (Empty)

### Sail & Rig

Full batten with 3 reef main sail  
Lazy bag  
Self tacking jib  
Harken 46 self tailing winch on coach roof  
Harken 46 self tailing 2 speed electrical winch on coach roof  
Harken 35 self tailing winch  
2 x Winch handles  
Spinnaker halyard

### Electronics & Navigation

B&G 12" Chartplotter at the helm station  
B&G speed, depth and wind instruments at the helm station  
B&G multi display at the chart table  
B&G VHF at the chart table  
B&G AIS receiver  
B&G autopilot  
Binoculars  
Hand bearing compass  
Paper navigation charts  
Cruising guide book  
Magnetic compass  
Navigational tools  
Black sphere & cone

### Electric

4 x 140 A service batteries  
2 x 95 A engine batteries  
Battery charger  
Inverter  
220 V shore power cable & adaptors  
Solar panels  
Decklight

### Comfort & Entertainment

3.00 m rigid bootm inflatable dinghy with oars & pump  
Fixed rigid bimini at helm station  
Bimini front, back and side covers  
Cockpit cushions  
Foredeck sunbath mattress  
Flybridge sunbathing area with mattress  
Forward deck area tent  
Seating at stb/port pullpits  
Fusion radio-MP3 player with bluetooth  
Speakers in saloon  
Speakers in cockpit  
USB outlets in saloon & cabins  
Fan in saloon & cabins  
230 Lt. refrigerator & freezer  
3 burner LPG stove & oven  
2 x LPG bottles  
Complete galley equipment  
Gangway  
Deck shower  
Swimming ladder  
Water heater  
4 x Electric toilets  
4 x Waste tanks

## STANDARD EQUIPMENT

### Mooring & Anchoring

Winch handle for windlass  
Electrical windlass, 1000 W  
20 Kg Delta anchor & 100 m of chain  
Windlass RC & chain counter at helm station  
8 x Fenders  
2 x Spherical fenders  
4 x 17 m spring lines  
2 x 50 m long line line  
2 x Rat guards  
Bridle  
Spare anchor with 5 m chain and 50 m rope

Clothes pegs  
User's manuals

### Safety

Life raft for 10 people  
Life jackets (10 + 2)  
Safety harnesses (10)  
Horseshoe life buoy and flashing light  
Distress signals (4+4+2)  
Wooden plugs  
Fire extinguishers  
Tool box  
First aid kit  
Barometer  
Torch / hand projector  
Fog horn  
Bosun chair  
Diver knife  
Underwater lamp  
Fire blanket  
Wire cutter  
Automatic bilge pumps in hulls & engine rooms (Stb / Port)  
Manual bilge pumps (Stb / Port)  
Emergency tiller

### Others

Large storage lockers at foredeck  
Bucket, scoope, sponge  
Snorkelling set (Mask, fins, snorkel)  
Boat hook, deck brush, floor squeegee